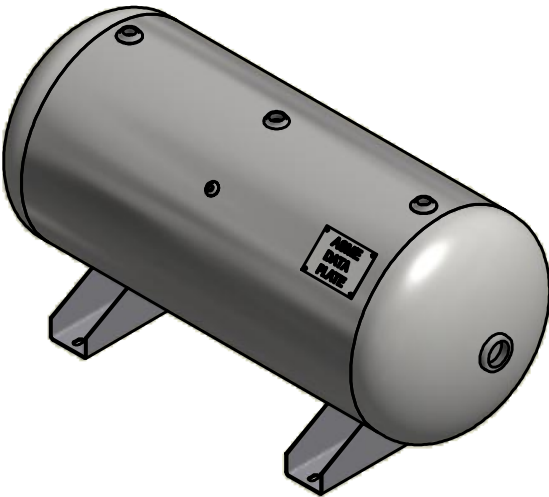
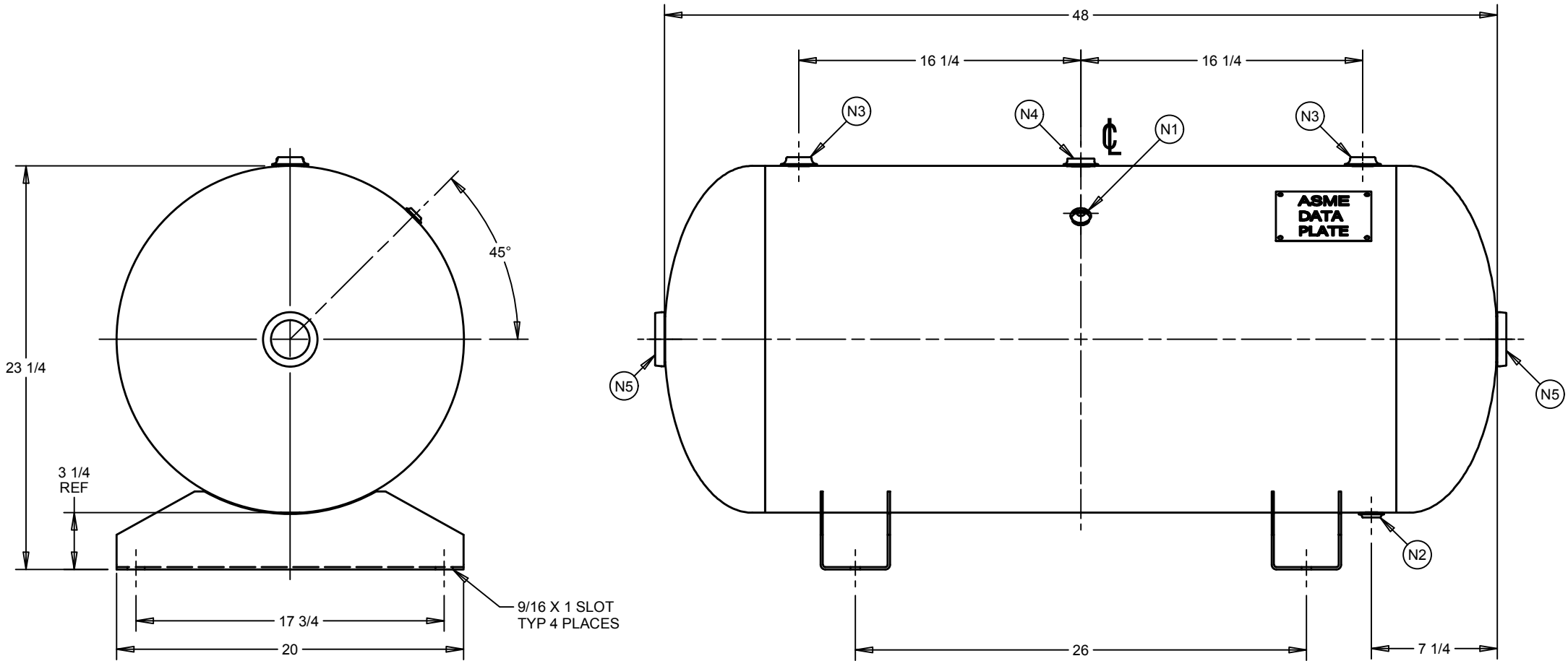



NOZZLE CHART	
NOZZLE ID	NPT SIZE
N1	1/4
N2	1/2
N3	3/4
N4	1
N5	2



DESIGN INFORMATION	
SPECIFICATION	VALUE
DIAMETER O.D./I.D.	20 O.D.
MAWP	200 PSI AT 400°F
MDMT	-20°F AT 200 PSI
CAPACITY	APPROX 60 GALLONS
SHIPPING WEIGHT	162 LBS
CRN	M3329.5C

TITLE		<div>The logo for Samuel Pressure Vessel Group features the word "SAMUEL" in a large, bold, black sans-serif font. To the right of "SAMUEL" is a vertical text "1955" in a smaller font. Below "SAMUEL" is the text "PRESSURE VESSEL GROUP" in a smaller, bold, black sans-serif font. Above the word "SAMUEL" is a red stylized flame or drop icon.</div>			
HORIZONTAL AIR RECEIVER					
CUSTOMER		DRAWN	CHECKED	DRAWING NO	REV
STOCK		KAT	DMM	A10029	A9
		10/6/2016	10/18/2016		
TYPE	ASME				
		SIZE: B	SHEET 1 OF 1		

(BUILT IN ACCORDANCE WITH LATEST EDITION OF SECTION VIII DIV 1 ASME CODE)

THIS DRAWING & SPECIFICATIONS ARE PROPERTY OF SPVG AND MAY NOT BE COPIED, REPRODUCED, OR USED IN WHOLE OR PART, AS A BASIS FOR DESIGN MANUFACTURE OR SALE WITHOUT PRIOR PERMISSION FROM SPVG.

A9	ISSUED	BY	DATE
REV	DESCRIPTION	BY	DATE