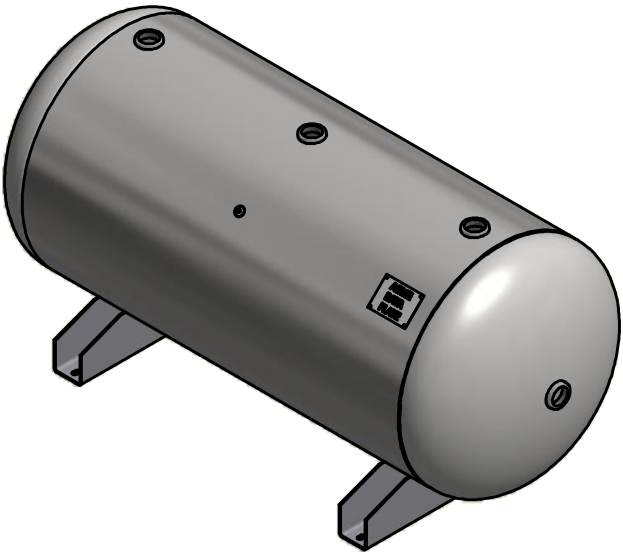
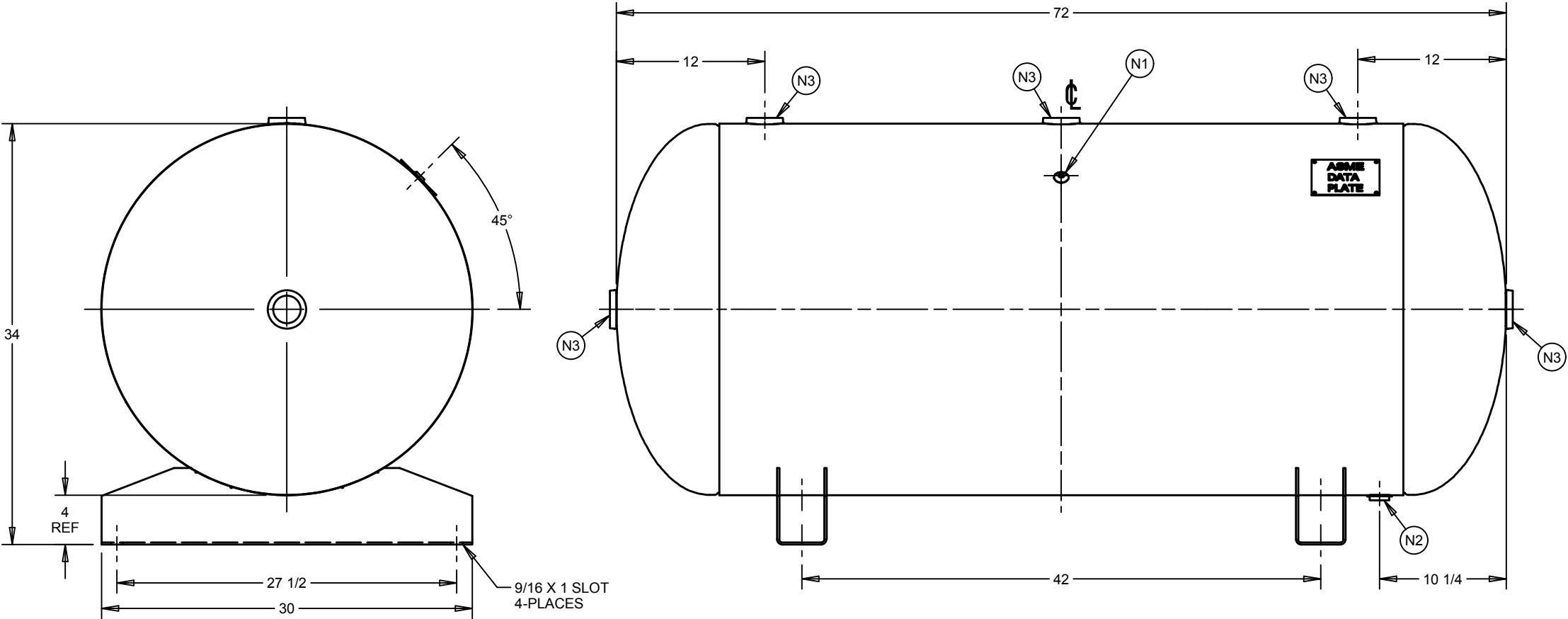


| NOZZLE CHART | |
|--------------|----------|
| NOZZLE ID | NPT SIZE |
| N1 | 1/4 |
| N2 | 1 |
| N3 | 2 |



| DESIGN INFORMATION | |
|--------------------|--------------------|
| SPECIFICATION | VALUE |
| DIAMETER O.D./I.D. | 30 O.D. |
| MAWP | 200 PSI AT 400°F |
| MDMT | -20°F AT 200 PSI |
| CAPACITY | APPROX 200 GALLONS |
| SHIPPING WEIGHT | 473 LBS |
| CRN | L4036.5C |

(BUILT IN ACCORDANCE WITH LATEST EDITION OF SECTION VIII DIV 1 ASME CODE)

THIS DRAWING & SPECIFICATIONS ARE PROPERTY OF SPVG AND MAY NOT BE COPIED, REPRODUCED, OR USED IN WHOLE OR PART, AS A BASIS FOR DESIGN MANUFACTURE OR SALE WITHOUT PRIOR PERMISSION FROM SPVG.

| | | | |
|-----|-------------|----|------|
| A13 | ISSUED | | |
| REV | DESCRIPTION | BY | DATE |

| | | | | | |
|----------|--|-------------------------|--------------|------------|-----|
| TITLE | | HORIZONTAL AIR RECEIVER | | | |
| CUSTOMER | | STOCK | | | |
| | | TYPE | ASME | | |
| | | DRAWN | CHECKED | DRAWING NO | REV |
| | | KAT | DMM | A10035 | A13 |
| | | 9/18/2016 | 10/12/2016 | | |
| | | SIZE: B | SHEET 1 OF 1 | | |